

Setup and Specifications Manual

Choral Riser

CRT41, CRT61
CRS41, CRS61
4th Step Addition

From Staging Canadell to You

We would like to sincerely **Thank You** for choosing Staging Canadell. You can have comfort knowing that you have purchased the strongest lightweight stage available that will give you years and years of service.

This Owners Manual has been designed to help you get the most out of your Staging Canadell products. Please take time to read the instructions pertaining to your Staging Canadell product to ensure safe and proper use of your portable stage or riser.

We have made set up and use quick and easy and made every effort to ensure that you will have years and years of trouble free service. If for some reason you do require repair or simply have a question on the use of your Staging Canadell product we encourage you to **call our service department at 1-866-748-5335**.

Staging Canadell manufactures a full line of portable stage and choral riser equipment. For information on other Staging Canadell products please give us a call or send us an email.

Staging Canadell Ltd.
Box 730, 311 Main Street
Humboldt, Sk.
S0K 2A0

1-866-748-5335
1-306-682-5338 (fax)

www.stagingcanadell.com
sales@stagingcanadell.com

Contents

Choral Riser.....	1-2
Stacking Instructions.....	3
4 th Step Addition.....	4
Maintenance.....	5
Warranty.....	6

Choral Risers

Product Description

The first thing you will notice about your new Risers is the depth of each tread. In a world full of narrow cramped choral risers our 21" deep tread (3" more than the standard) gives you plenty of standing room without bumping the singer in front of you and makes great tiered seating for class room settings!

Staging Canadell Choral Risers are a folding 3 tier riser (8"/16"/24") with an optional 4th tier available. The risers come in a straight and tapered version and are available in 4' and 6' models. Railings and other accessories are available.

Specifications

Dimensions	<p><i>Standard</i> 4' straight, 4' tapered/ 6' straight 6' tapered <i>Custom</i> sizes available Profile 3" Approximately 80/120 lbs per section (4'/6') Load Tested to 200 lbs/sqft</p>
Materials	<p><i>Deck</i> 3/4" Fir G2S plywood surfaced with: Skidguard - a high density textured skid/scuff resistant black Phenolic overlay; or Carpet - commercial grade carpet (standard Grey, optional colors available)</p> <p><i>Side Rail</i> 3" deep anodized 6063 T5 extruded aluminum side rail</p> <p><i>Leg</i> Fixed leg 1 x 1 powder coated steel Folding Leg 1 1/8 powder coated steel tube</p> <p><i>Flexcord Attachment</i> Risers are secured together using a flexible cord</p>

Set Up Instructions

1. Tip riser to engage front wheels and move into position
2. Fold open and lock into position the top tier legs
3. Flip top tier then repeat for bottom tier

Additional Set-Up Instructions

Choral Riser Specification.....	2
Stacking Instructions.....	3
4 th Step Addition.....	4

Specifications for all Choral Risers

Specifications:

Actual Size: Tread Depth - 21"
Tread Width - 6' and 4'

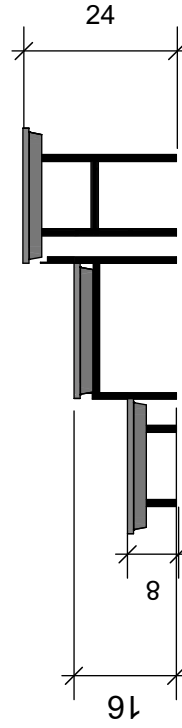
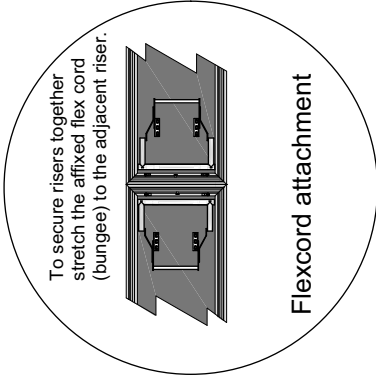
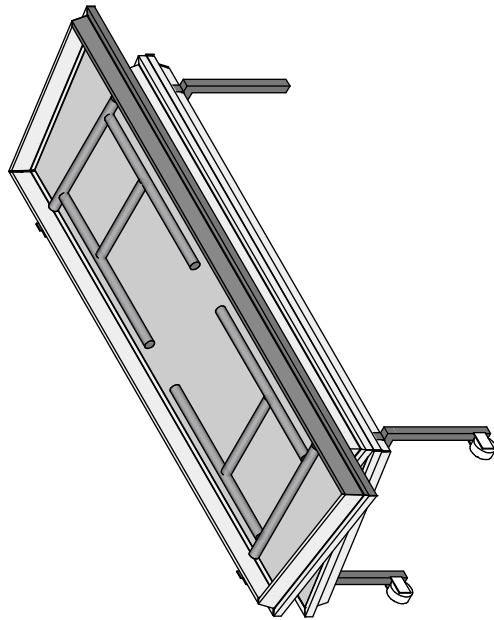
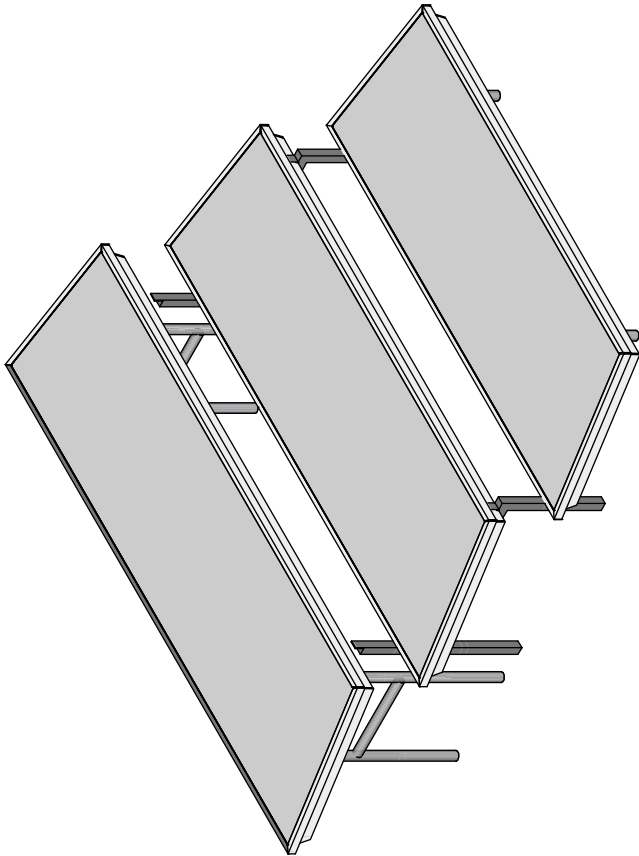
Height: Level 1 - 8"
Level 2 - 16"
Level 3 - 24"
Level 4 - 32" (optional level)

Material:
Option 1 3/4" (19mm) G2S Plywood, cover with carpet
Option 2 3/4" (19mm) Black Phenolic Overlay: High density textured skid/scuff resistant top, and a smooth overlay back that will not blister or peel

Approx. Weight:
6' Tapered - 115 lbs
6' Straight - 125 lbs
4' Tapered - 80 lbs
4' Straight - 90 lbs

Load Tested: 200lbs/sq.ft. live load

- Components:**
- 3" anodized aluminum edging for protecting stage edge, adding strength while remaining lightweight
 - Legs are constructed of fold away 1 1/8" round 16 ga. (.065) powder coated steel with non marking plastic leg caps.
 - Platforms can be securely joined to other platforms with a simple to use optional leg to leg clamp
 - 3" Casters allow for easy roll away storage



Scale 1:30

	Top Tier	Middle Tier	Bottom Tier
CRT61	72"	65"	58"
CRS61	72"	72"	72"
CRT41	48"	48"	48"
CRS41	48"	41"	34"

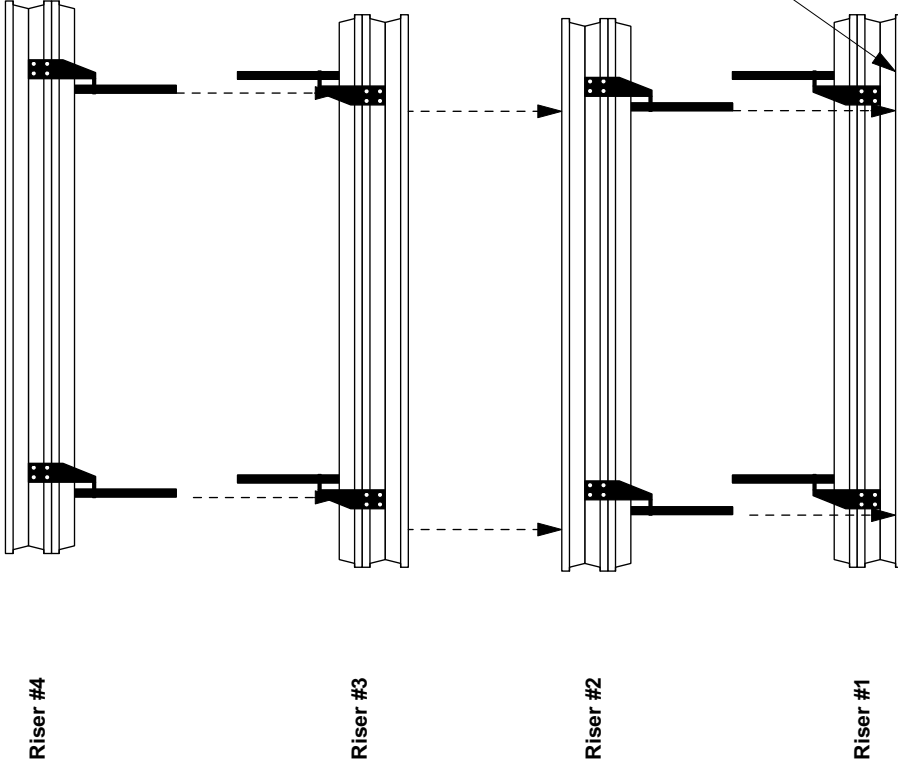
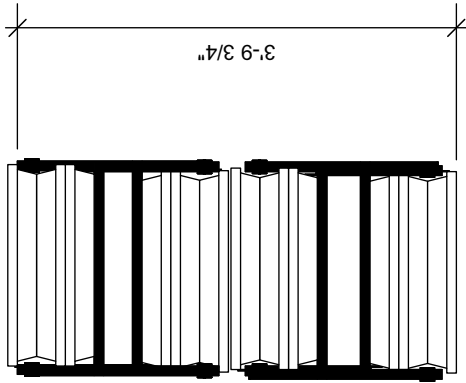
TITLE CRT41, CRT61, CRS41, CRS61



DATE November 19, 2008	REV	DRAWN BY egv	SCALE	PAGE 1
DATE	REV	DRAWN BY		

Instruction for Stacking Choral Risers

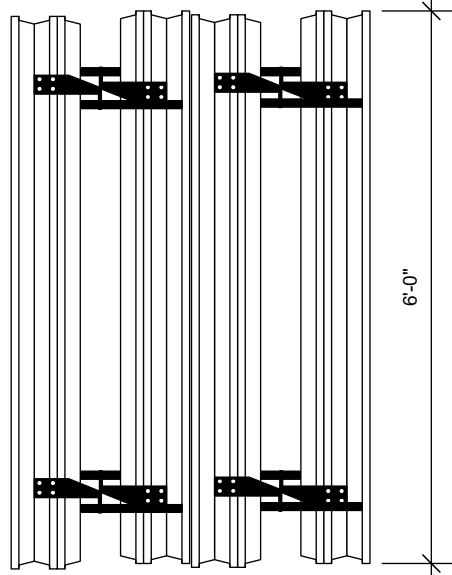
End View



Stacking Instruction

1. Flip the first riser upside down (with the support legs pointing up)
2. Nest the second riser on to the first. Offset the support legs to allow the second riser support legs to rest on the bottom edge of the first riser
3. Flip the third riser upside down and lay it on top of the second riser
4. Repeat Step 2 for the 4th riser

Side View



DESIGNED FOR



Instruction for Stacking Choral Risers

TITLE

REV

DATE

REV

DATE

DRAWN BY

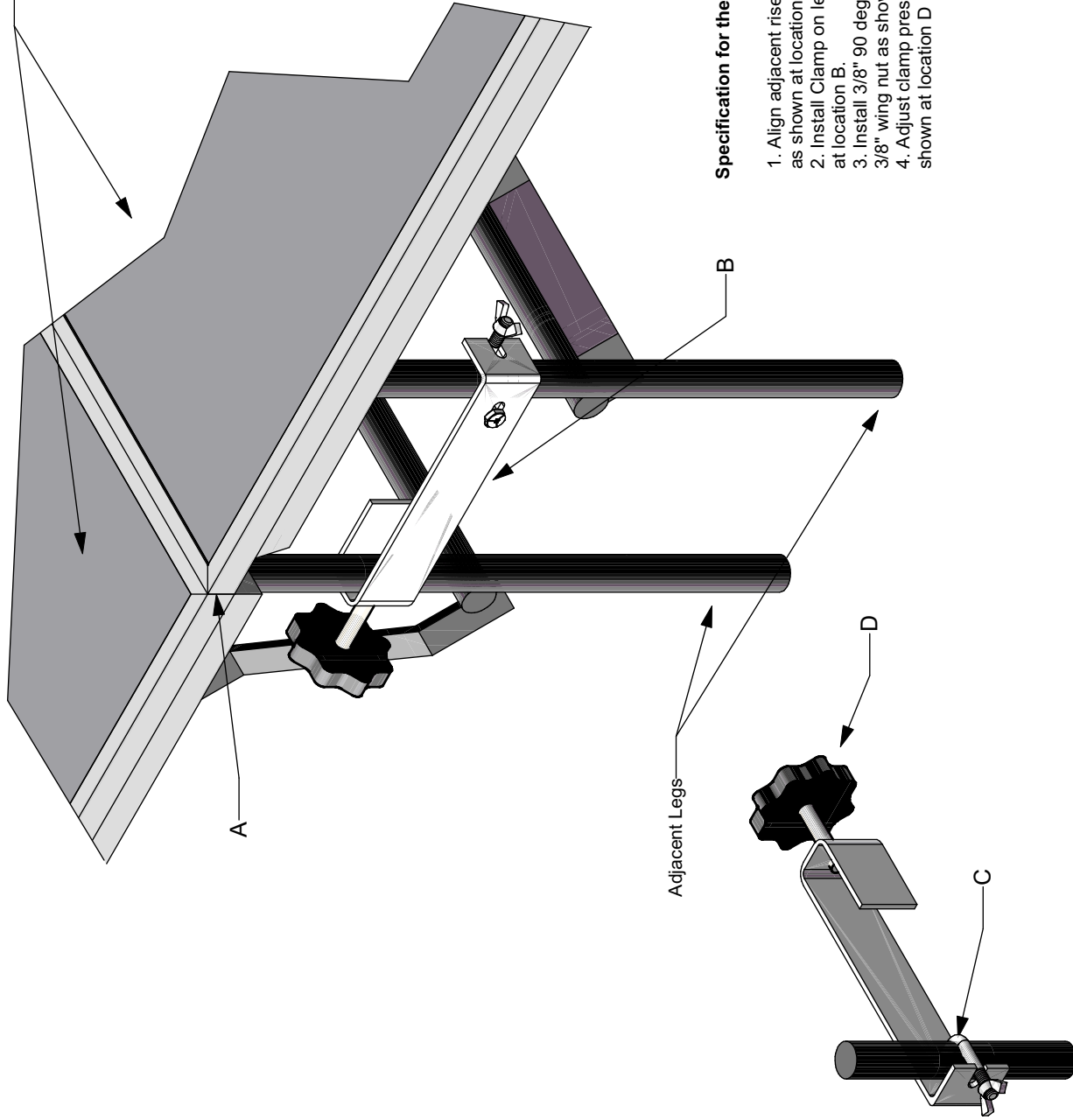
egv

SCALE

PAGE

1

Riser 24" level shown



Specification for the Choral Riser Leg to Leg Clamp

1. Align adjacent risers so the corners meet together as shown at location A
2. Install Clamp on leg above gusset brace as shown at location B.
3. Install 3/8" 90 deg bolt around leg and tighten with 3/8" wing nut as shown at location C
4. Adjust clamp pressure with 1/2" stud and handle as shown at location D

Right Rear Projection



Riser Leg to Leg Clamp - St-ASSY0020

TITLE		SCALE		PAGE	
DATE	REV	DRAWN BY	egv		1
DATE	REV	DRAWN BY			



Maintaining Your Staging Canadell Products

Frequency of product inspection required will depend on amount of use and if the products are left assembled or if they are set up and taken down regularly. It is recommended to develop your own inspection schedule based on your usage.

Preventative maintenance:

- Install all Staging Canadell products according to the manufacturer's installation instructions provided with your order
- Ensure that locking procedures are followed according to instructions
- Store Staging Canadell products where they will not be damaged. Stage carts are recommended for storage.

Scheduled maintenance:

- Periodically check all parts for wear
- Check for loose hardware
- Check locking devices to ensure that they are secure

Replacement parts:

- Contact Staging Canadell Customer Service at 1-866-748-5335 for all replacement parts and warranty claims



STAGING CANADELL LTD.WARRANTY POLICY

All Staging Canadell products and components are guaranteed for Ten (10) years from the date of purchase against product failure due to defective materials or workmanship.

Upon approval of a warranty claim, the customer is entitled to either a full refund, repair or replacement of the defective product without charge. Staging Canadell may request to see the defective product, the shipping cost of which will be the responsibility of the customer. Costs related to shipping replacement product to the customer will be the responsibility of Staging Canadell.

Warranty will not be offered for any damages due to abuse, negligence, vandalism, unauthorized alteration or attachments or improper storage.