

Setup and Specifications Manual

Legacy Stage



From Staging Canadell to You

We would like to sincerely **Thank You** for choosing Staging Canadell. You can have comfort knowing that you have purchased the strongest lightweight stage available that will give you years and years of service.

This Owners Manual has been designed to help you get the most out of your Staging Canadell products. Please take time to read the instructions pertaining to your Staging Canadell product to ensure safe and proper use of your portable stage or riser.

We have made set up and use quick and easy and made every effort to ensure that you will have years and years of trouble free service. If for some reason you do require repair or simply have a question on the use of your Staging Canadell product we encourage you to **call our service department at 1-866-748-5335**.

Staging Canadell manufactures a full line of portable stage and choral riser equipment. For information on other Staging Canadell products please give us a call or send us an email.

Staging Canadell Ltd.
Box 730, 311 Main Street
Humboldt, Sk.
S0K 2A0

1-866-748-5335
1-306-682-5338 (fax)

www.stagingcanadell.com
sales@stagingcanadell.com

Contents

Legacy Stage.....	1-2
Leg to Leg Clamps.....	3
Storage Carts.....	4
Maintenance.....	5
Warranty.....	6

Legacy Stage

Product Description

The Legacy Stage is a folding leg, fixed height (8"/16" or 24") stage that can be set up and taken down quickly with no tools required. The folding legs span the full width of the platform providing rock solid strength and stability.

Available in a 4'x8' size and 200 lb/sqft load rating, the Legacy Stage has a multitude of accessories available including storage carts, stairs, railing, and skirting. This improves the functionality and appeal of your stage. Use the Legacy Stage as a stand alone stage or secure several platforms together to make a larger performance stage.

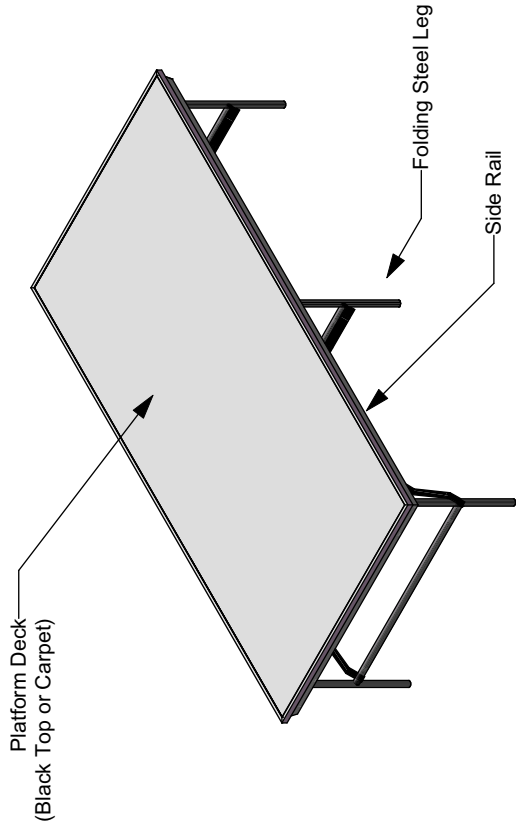
Specifications

Dimensions	<i>Standard 4 x 8</i> <i>Profile 3"</i> <i>Approximately 100 lbs per section</i> <i>Load Tested to 200 lbs/sqft</i>
Materials	<i>Deck</i> <i>3/4" Fir G2S plywood surfaced with:</i> <i>Skidguard - a high density textured skid/scuff resistant black Phenolic overlay; or</i> <i>Carpet - commercial grade carpet (standard Grey, optional colors available)</i> <i>Side Rail</i> <i>3" deep anodized 6063 T5 extruded aluminum side rail</i> <i>Leg</i> <i>Folding leg from 1 1/8" powder coated steel tube with non marking flat caps</i> <i>Leg to leg Clamps</i> <i>Stages are secured together using steel fabricated Leg to Leg Clamps</i>

Set Up Instructions

1. Place platform on the floor upside down.
2. Unfold legs and lock into straight position.
3. Flip platform to upright position and move to desired location.
4. Secure stages to one another using Leg to Leg Clamp.

Specifications for Legacy Staging



Specifications:

Actual Size:
Standard size: 4 x 8
Leg Height: 8", 16", 24"

Material: Deck

3/4" Fir G2S plywood surfaced with:
Skidguard - a high density textured skid/scuff
resistant black Phenolic overlay; or
Carpet - commercial grade carpet (standard Grey,
optional colors available)

Side Rail

3" deep anodized 6063 T6 extruded aluminum
side rail

Leg

1 1/8" welded, powdercoated, folding steel leg with non
marking flat caps

Leg To leg Clamp

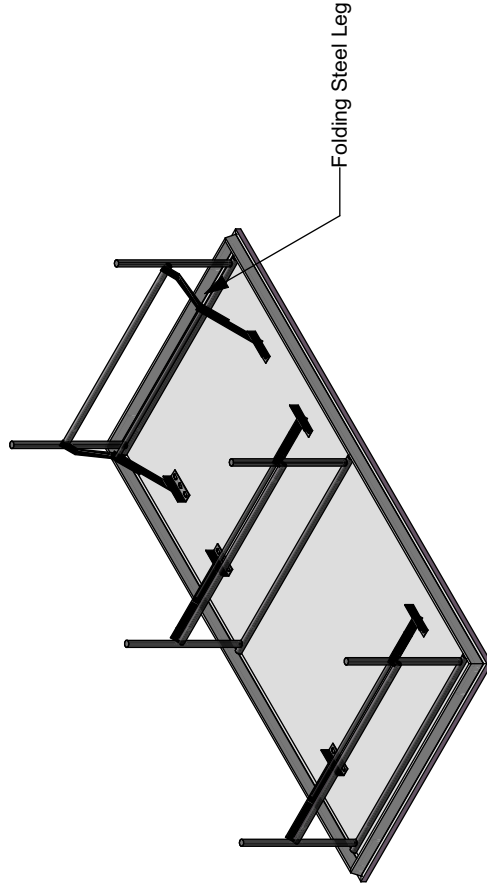
Stages are locked together using a formed/powdercoated
steel clamp

Approx. Weight: 100 lbs/ 4 x 8 section

Load Tested: 200lbs/sq.ft. live load

Assembly:

1. Place platform on floor upside down
2. Unfold legs ensuring they are locked in place
3. Flip stage upright and move into place, securing to adjacent sections using Leg to Leg Clamps



TITLE

Specifications for Legacy Staging

DATE

REV

DATE

REV

DATE

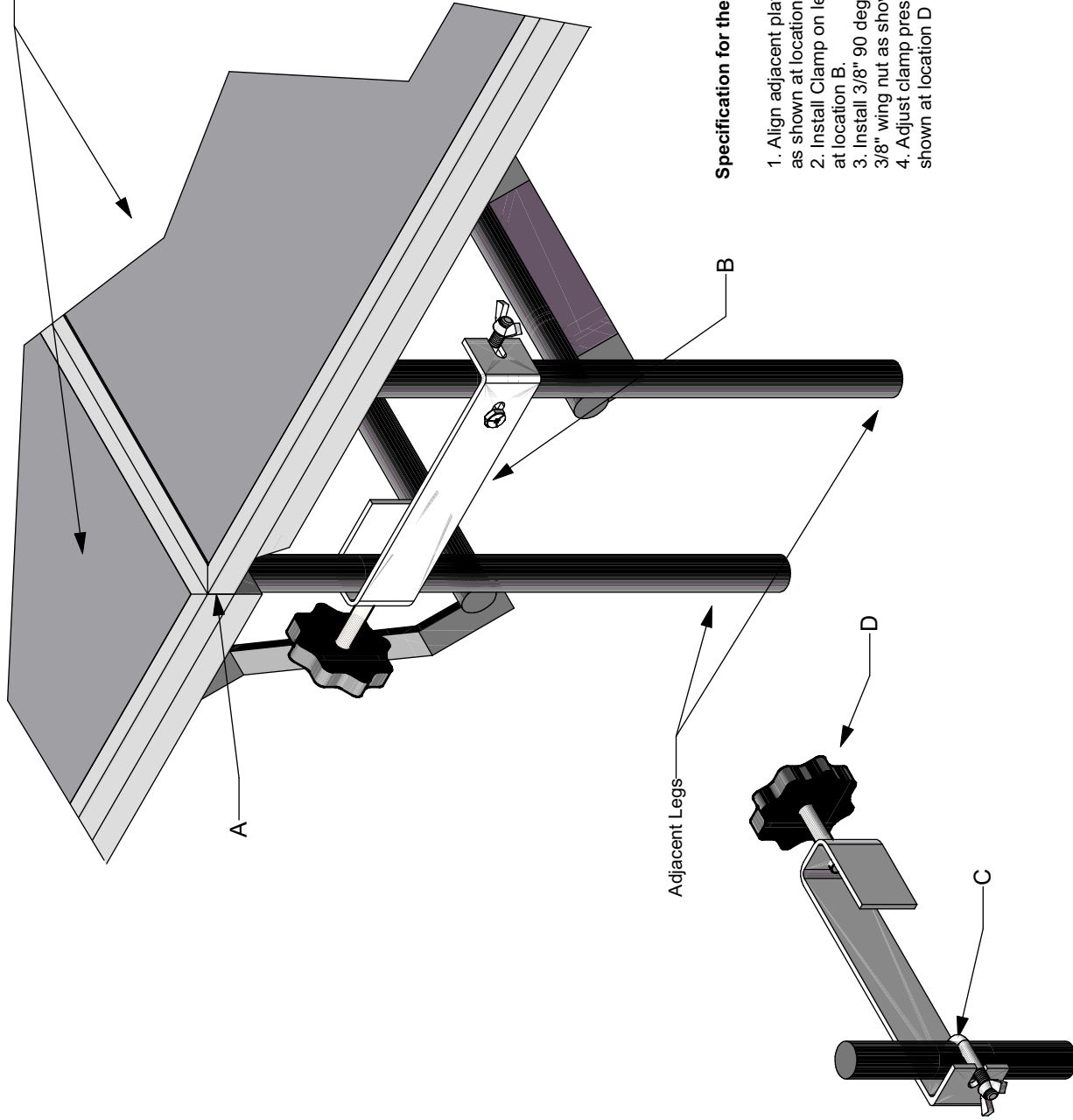
SCALE

PAGE

1



Legacy Stage 24" level shown



Specification for the Legacy Leg to Leg Clamp

1. Align adjacent platforms so the corners meet together as shown at location A
2. Install Clamp on leg above gusset brace as shown at location B.
3. Install 3/8" 90 deg bolt around leg and tighten with 3/8" wing nut as shown at location C
4. Adjust clamp pressure with 1/2" stud and handle as shown at location D

Right Rear Projection



Legacy Leg to Leg Clamp

TITLE		DRAWN BY		SCALE	PAGE
DATE	REV	DATE	REV	egv	1
DATE	REV	DATE	REV		

Specifications for a Executive and Legacy Portable Stage Carts

Specifications:

Actual Size:
Executive:

- 6unit (25.5" x 105")
- 8unit (33.5 x 105")
- 9unit (37.5 x 105")
- 6unit (24" x 100")
- 9unit (32" x 100")
- 10unit (36" x 100")

Duchess:

Material:

All Carts are manufactured from 2 x 2 x .1 powder coated steel (black)

Approx. Weight:
Weight Range

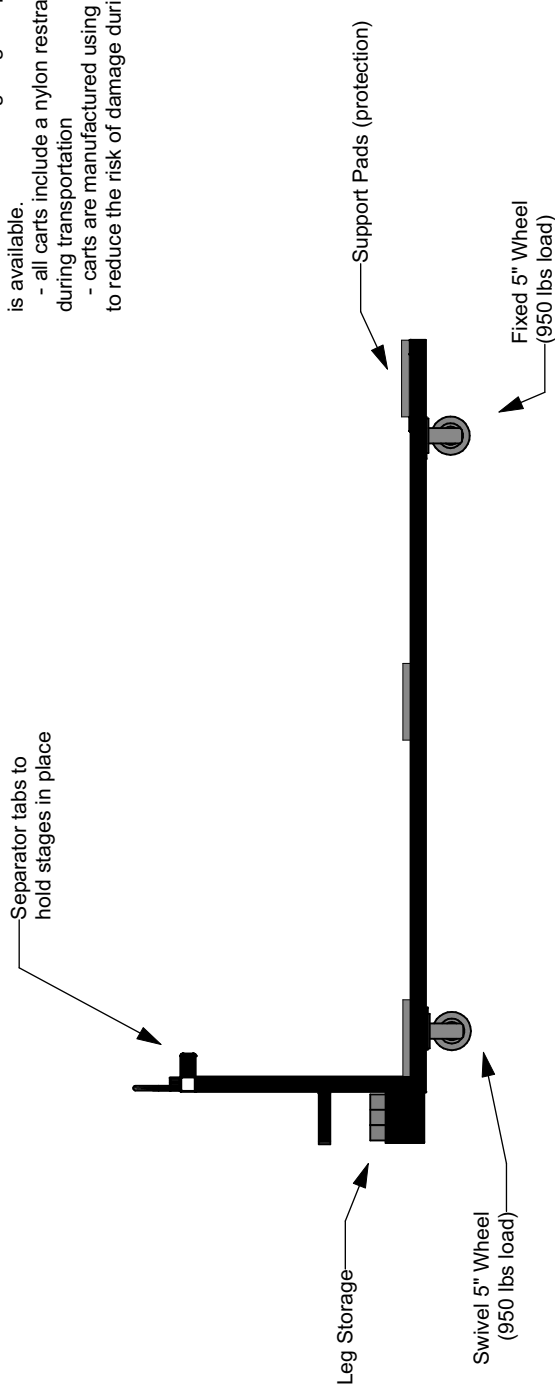
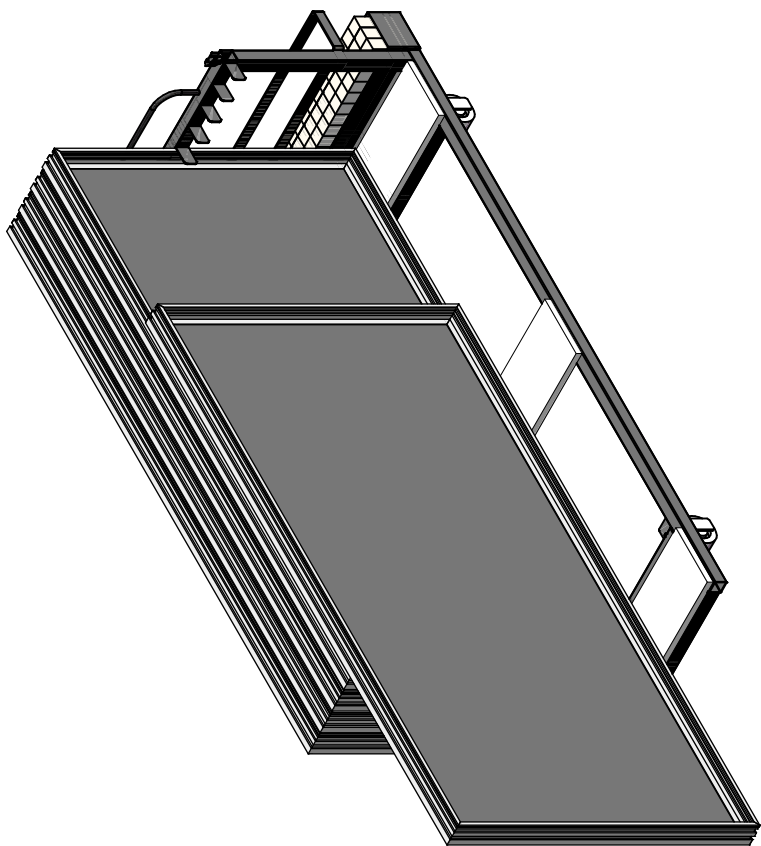
125-150 (depending on size)

Load Tested:

3800 lbs

Components:

- two 5" fixed and two 5" swivel(rear) castors with phenolic non-marking wheels (950lbs each)
- Executive carts have a leg tray located at the back of the cart to store stage legs. Optional understage storage is available.
- all carts include a nylon restraint to hold stages in place during transportation
- carts are manufactured using 3 carpeted support pads to reduce the risk of damage during transportation



DESIGNED FOR



TITLE: **Executive and Legacy Portable Stage Storage Carts**

SCALE: egv

DRAWN BY: egv

DRAWN BY:

DATE:

REV:

DATE:

REV:

DATE:

PAGE: 1



Maintaining Your Staging Canadell Products

Frequency of product inspection required will depend on amount of use and if the products are left assembled or if they are set up and taken down regularly. It is recommended to develop your own inspection schedule based on your usage.

Preventative maintenance:

- Install all Staging Canadell products according to the manufacturer's installation instructions provided with your order
- Ensure that locking procedures are followed according to instructions
- Store Staging Canadell products where they will not be damaged. Stage carts are recommended for storage.

Scheduled maintenance:

- Periodically check all parts for wear
- Check for loose hardware
- Check locking devices to ensure that they are secure

Replacement parts:

- Contact Staging Canadell Customer Service at 1-866-748-5335 for all replacement parts and warranty claims



STAGING CANADELL LTD.WARRANTY POLICY

All Staging Canadell products and components are guaranteed for Ten (10) years from the date of purchase against product failure due to defective materials or workmanship.

Upon approval of a warranty claim, the customer is entitled to either a full refund, repair or replacement of the defective product without charge. Staging Canadell may request to see the defective product, the shipping cost of which will be the responsibility of the customer. Costs related to shipping replacement product to the customer will be the responsibility of Staging Canadell.

Warranty will not be offered for any damages due to abuse, negligence, vandalism, unauthorized alteration or attachments or improper storage.